

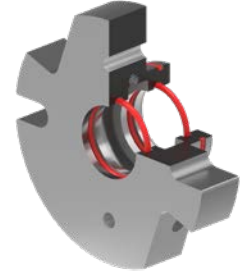


1224A-ASP SERIES™, 1324A-ASP SERIES™

CAST IRON CONSTRUCTION | ASPHALT PUMP

LEAK PREVENTION WITH O-PRO® CARTRIDGE SEAL

Asphalt has traditionally been sealed with packing, which must continuously leak to stay lubricated. The ASP asphalt series pumps come standard with Viking's O-Pro® Cartridge seal, which uses O-rings in combination with a lubricating grease to provide a robust seal that keeps process fluid from leaking out of the pump. The O-Pro® cartridge seal improves operational efficiency by not requiring periodic repacking or re-tensioning of the seal gland, and the leak prevention avoids loss of product and clean up costs.



FEATURES & BENEFITS

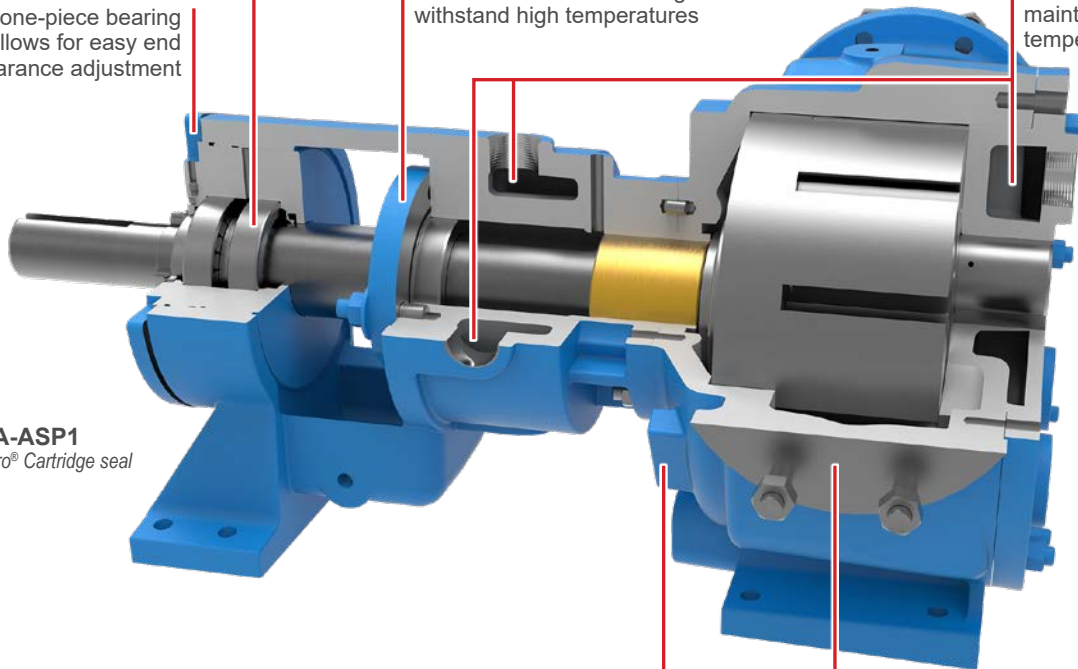
- Rugged design provides superior performance in asphalt applications
- Tight clearances offer high efficiency and excellent priming capabilities
- O-Pro® Cartridge seal combines reliable sealing with easy maintenance
- Hardened bushings, shaft, rotor, and idler used in ASP2 model to resist wear in abrasive applications

Double row ball or tapered roller bearings for axial thrust control

Threaded one-piece bearing housing allows for easy end clearance adjustment

O-Pro® Cartridge seal comes standard with FFKM O-rings to withstand high temperatures

Jacketing for steam or hot oil circulation to maintain a constant temperature



N1324A-ASP1
Shown with O-Pro® Cartridge seal

One-piece cast bracket with seal between bearings provides rigid foundation to maximize seal and bearing life

Port sizes, types, and ratings vary by pump size; see table on back



CAPACITY
to 1,500 GPM
(340 m³/h)



PRESSURE
to 200 PSI
(14 BAR)



VISCOSITY
100 to 2,000,000 SSU
(20 to 440,000 cSt)



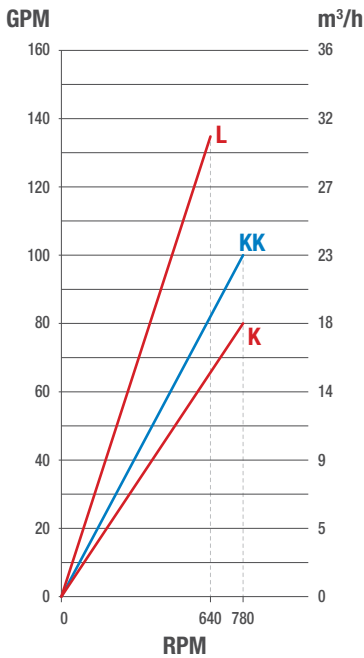
TEMPERATURE
0°F to +450°F
(-15°C to +230°C)

PERFORMANCE

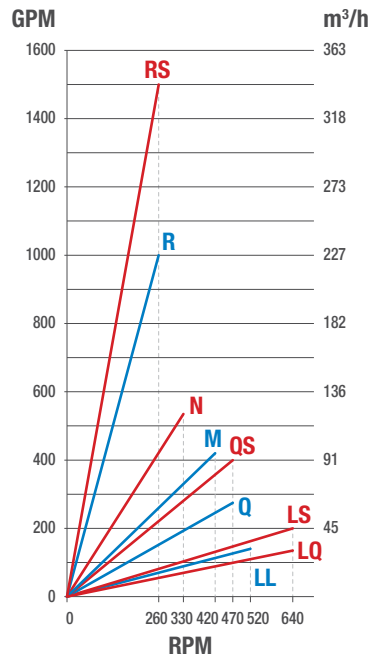
MODELS	SPECIFICATIONS								
	Jacketed	ASP1: Clean Asphalt			ASP2: Filled Asphalt			Standard Ports	
O-Pro® Cartridge Seal	Max Speed, RPM	GPM	m³/h	Max Speed, RPM	GPM	m³/h	Size, Inches	Type	Orientation
K1224A-ASP	780	80	18	280	25	6	2	NPT	Right Angle
KK1224A-ASP	780	100	23	280	35	8	2	NPT	Right Angle
L1224A-ASP	640	135	31	230	50	11	2	NPT	Right Angle
LQ1224A-ASP	640	135	31	230	50	11	2 ½	Flange	Right Angle
LL1224A-ASP	520	140	32	230	65	15	3	Flange	Right Angle
LS1224A-ASP	640	200	45	230	72	16	3	Flange	Right Angle
Q1224A-ASP	470	275	62	190	110	25	4	Flange	Right Angle
QS1224A-ASP	470	400	91	190	180	41	6	Flange	Opposite
M1224A-ASP	420	420	95	155	155	35	4	Flange	Right Angle
N1324A-ASP	330	550	125	130	210	48	6	Flange	Opposite
R1324A-ASP	260	1,000	227	100	350	80	8	Flange	Opposite
RS1324A-ASP	260	1,500	340	—	—	—	10	Flange	Opposite

CURVES

NPT PORTS



FLANGE PORTS



NOTE: Maximum speed shown for ASP1 model pumps. For ASP2 models, refer to maximum speeds listed under the performance specifications section.

MODELS FOR SPECIFIC APPLICATIONS

ASP1 MODELS FOR CLEAN, NON-ABRASIVE LIQUIDS

ASP1 models improve upon Viking's robust design that has been used for decades of successful asphalt transfer by adding shaft seal leak prevention through use of Viking's O-Pro® Cartridge seal.

ASP2 MODELS FOR ABRASIVE, FILLED ASPHALTS

ASP2 models utilize hard parts in key wear areas to reduce abrasive wear to extend pump life. The ASP2 pumps offer shaft seal leak prevention with Viking's O-Pro® Cartridge seal.

PORTING

- Right Angle (90°) (Rotatable Casing), K-Q & M
- Opposite (180°), QS, N-RS
- NPT, K-L
- Flanged (ANSI), LQ-RS

SEALING

- O-Pro® Cartridge Seal

MOUNTING

- Foot Mount

TYPICAL APPLICATIONS

- Filled Asphalt
- Polymer Modified Asphalts (PMA)
- Cutback Asphalt
- Flux
- Blown Asphalt
- Asphalt Emulsion
- Pitch
- Tar

Note: O-Pro® Cartridge Seal is patented.



VIKING PUMP, INC.
A Unit of IDEX Corporation
406 State Street
Cedar Falls, Iowa 50613 U.S.A.
vikingpump.com

CONTACT YOUR STOCKING DISTRIBUTOR TODAY

